

Draft: A Study of Detectable Warning System Retrofit Installation

City of Columbus

Ohio Public Service Department Transportation Division

Please feel free to print this PDF form. The document is below. Please scroll down.

For more relevant information, please visit the Armor Tile website. This website is an excellent resource on ADA solutions, ADA regulations and requirements, truncated domes, detectable warning surface tiles and more.

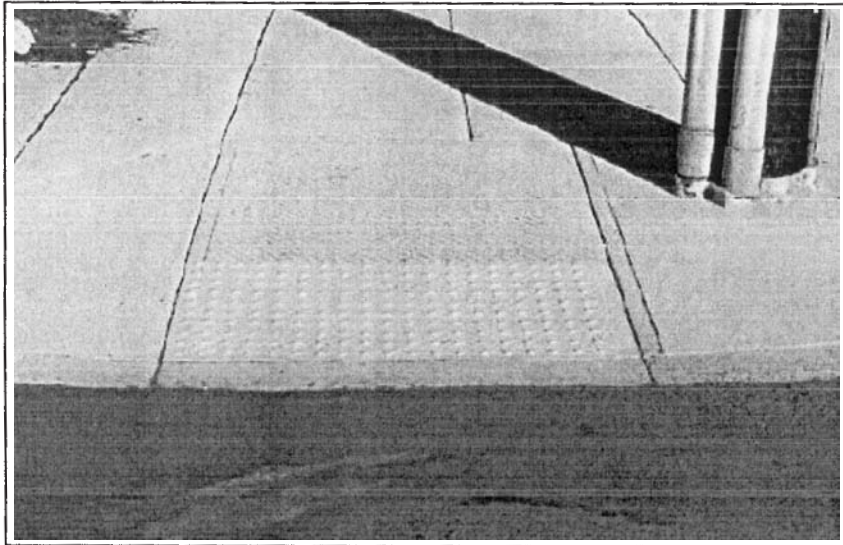
You will find extensive content in the form of PDF files, Videos, Images, Word Documents, Power Point Presentations, Flash Presentations and AutoCAD Drawings on the Armor Tile website, by clicking the link below. Be sure to bookmark the Armor Tile site as a favorite.

[**http://www.armor-tile.com**](http://www.armor-tile.com)

DRAFT



**City of Columbus, Ohio
Public Service Department
Transportation Division**



A Study of Detectable Warning System Retrofit Installations

Interim Report

At November 4, 2003

DRAFT

**Public Service Director:
Division Administrator:
City Engineer:**

**Linda K. Page
Pamela A. Clawson, P.E.
Randall J. Bowman, P.E**

Highlights from

A Study of Detectable Warning System Retrofit Installations

By City of Columbus, Ohio Public Service Department, Transportation Division

ARMOR-TILE DETECTABLE WARNING TILES Engineered Plastics Inc.

Surface Applied Tiles

Retrofit application for existing concrete surfaces

- Meets all applicable standards
- Meets ADAAG Standards
- Retrofit installation rating “very good”
- Excellent constructability in retrofit applications
- Is one of the easiest to install of the products tested in retrofit situations
- Aesthetically rated “Excellent – Second only to Armor-Tile Cast-In-Place”
- Excellent slip resistance wet or dry
- Excellent appearance
- Clean and neat installation – no faults found

Cast-In-Place Tiles

New construction concrete application

- Meets all applicable standards
- Meets ADAAG Standards
- Designed for installation during concrete pouring – new construction
- Aesthetically rated “Excellent – Best of those tested”
- Excellent slip resistance wet or dry
- Excellent appearance
- Clean and neat installation – no faults found