

© 2006 ENGINEERED PLASTICS
 CONFIDENTIAL AND PROPRIETARY DOCUMENT
 ANY ONE OR MORE OF THE FOLLOWING
 PATENTS MAY APPLY
 U. S. PATENT NO. 5,303,669, 5,775,835,
 6,449,790, AND 6,895,622 B5
 C.D.N. PATENT NO. 2,032,532, 2,070,984
 US PATENTS PENDING.
 © KENNETH E. SZEKELY

MATERIAL LIST

#	DESCRIPTION	PART No.	QTY
1	ARMOR-TILE	ADA-C-GUID	1

** COLOR CODE
 YELLOW (YV), RED (RD), BLACK (BK),
 DARK GREY (DG), LIGHT GREY (LG),
 WHITE (WH), OCRE YELLOW (OY),
 BLUE (BL), COLOMIAL RED (CR),
 CUSTOM COLORS AVAILABLE

No.	DATE	REVISION	APPR.

SCALE

DESIGNED	BY	DATE
	K.S.	08/90

ISSUED	BY	DATE
	D.C.	2/22/2006

PROJECT MANAGER

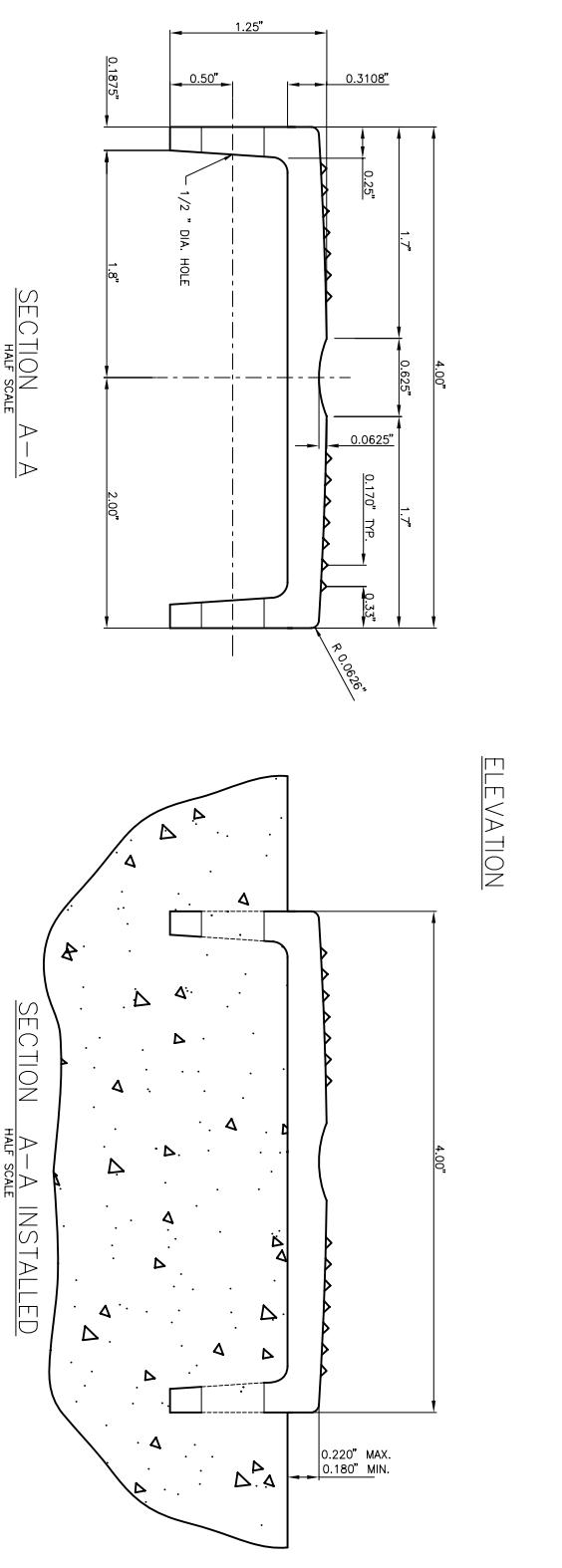
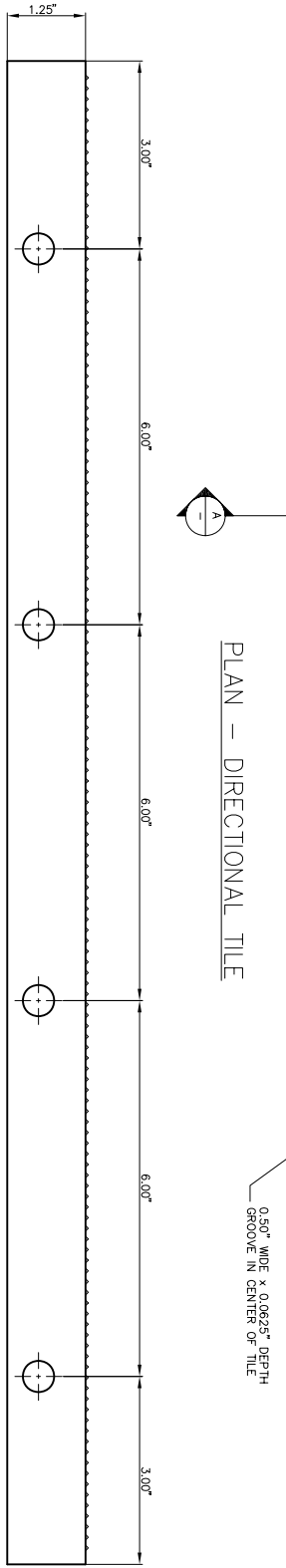
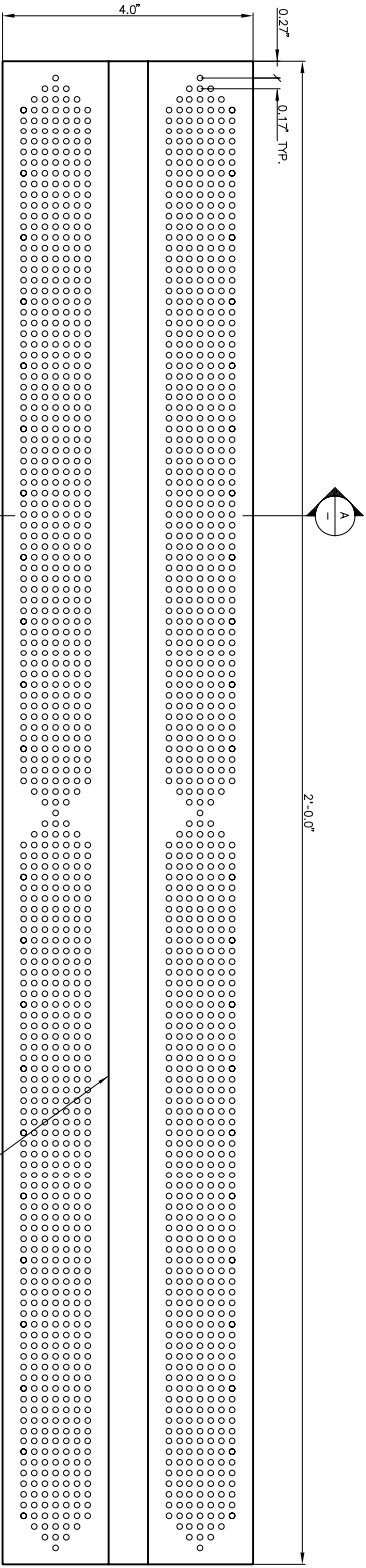
TAKE	PART No.

VERIFIED POLYMER COMPOSITE

Armor-Tile™ ADA
 SOUND AMPLIFYING DETECTABLE/TACTILE
 WARNING SURFACE TILE

Armor-Tile™
 DETECTABLE/TACTILE
 WARNING SURFACE GUIDANCE TILE
 4" x 24" SURFACE APPLIED
 PLANS AND DETAILS

DRAWING No.: ADA-C-GUID
 REV. No.: 0



SECTION A-A
 HALF SCALE

SECTION A-A INSTALLED
 HALF SCALE