

© 2006 ENGINEERED PLASTICS
 CONFIDENTIAL AND PROPRIETARY DOCUMENT
 ANY ONE OR MORE OF THE FOLLOWING
 PATENTS MAY APPLY
 U. S. PATENT NO. 5,303,669, 5,775,835,
 6,449,790, AND 6,895,622 B5
 C.D.N. PATENT NO. 2,032,532, 2,070,984
 US PATENTS PENDING.
 DR. KENNETH E. SZEKELY

MATERIAL LIST

#	DESCRIPTION	PART NO.	QTY
1	ARMOR-TILE	ADA-S-2460	1
2	EXPANSION ANCHOR	ADA-FAST	10
3	ARMOR-BOND	ADA-ADHE-EA	1
4	ARMOR-SEAL	ADA-SEAL-EA	1

** COLOR CODE
 YELLOW (YV), RED (RD), BLACK (BK),
 DARK GREY (DG), LIGHT GREY (LG),
 WHITE (WH), OCRE YELLOW (OY),
 BLUE (BL), COGNAC, RED (CR)
 CUSTOM COLORS AVAILABLE

No.	DATE	REVISION	APPR.

SCALE

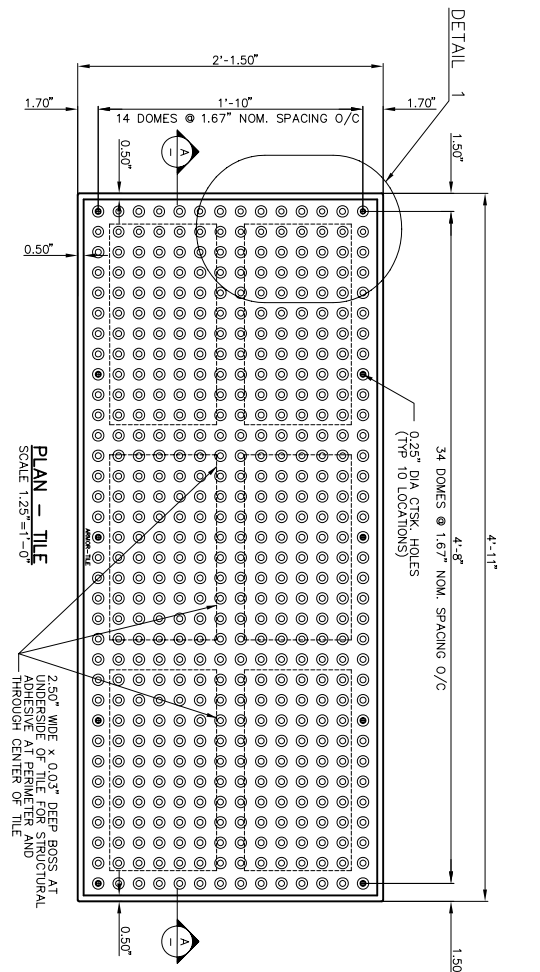
DESIGNED	BY	DATE
K.S.	08/90	
CHECKED	DATE	
D.G.	2/22/2006	

PROJECT NUMBER	PART NO.
	ADA-S-2460-**-**

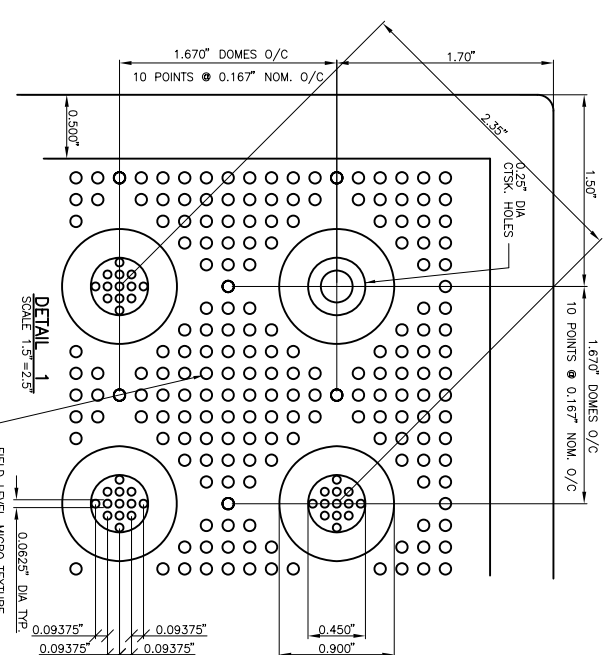
Armor - Tile™ ADA
 SOUND AMPLIFYING DETECTABLE/TACTILE
 WARNING SURFACE TILE

Armor - Tile™
 DETECTABLE/TACTILE
 WARNING SURFACE TILE
 24" x 60" SURFACE APPLIED
 INLINE DOME TILE PLANS
 AND DETAILS

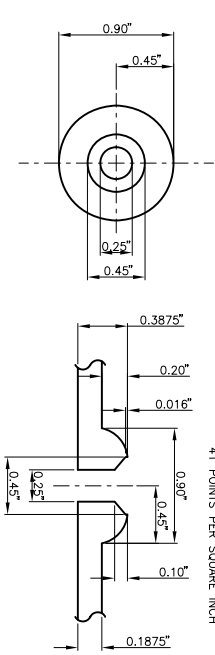
DRAWING NO.: ADA-S-2460 REV. NO.: 0



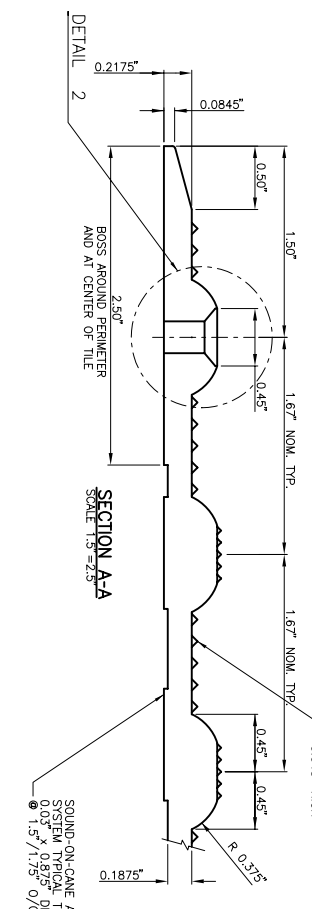
PLAN - TILE
 SCALE 1:25"=1'-0"



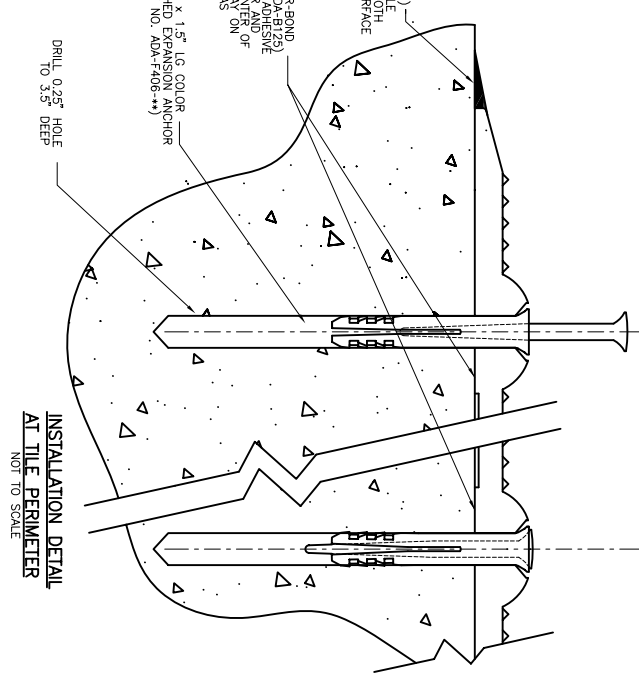
DETAIL 1
 SCALE 1.5"=2.5"



DETAIL 2
 SCALE 1.5"=2.5"



SECTION A-A
 SCALE 1.5"=2.5"



INSTALLATION DETAIL
 AT TILE PERIMETER
 NOT TO SCALE