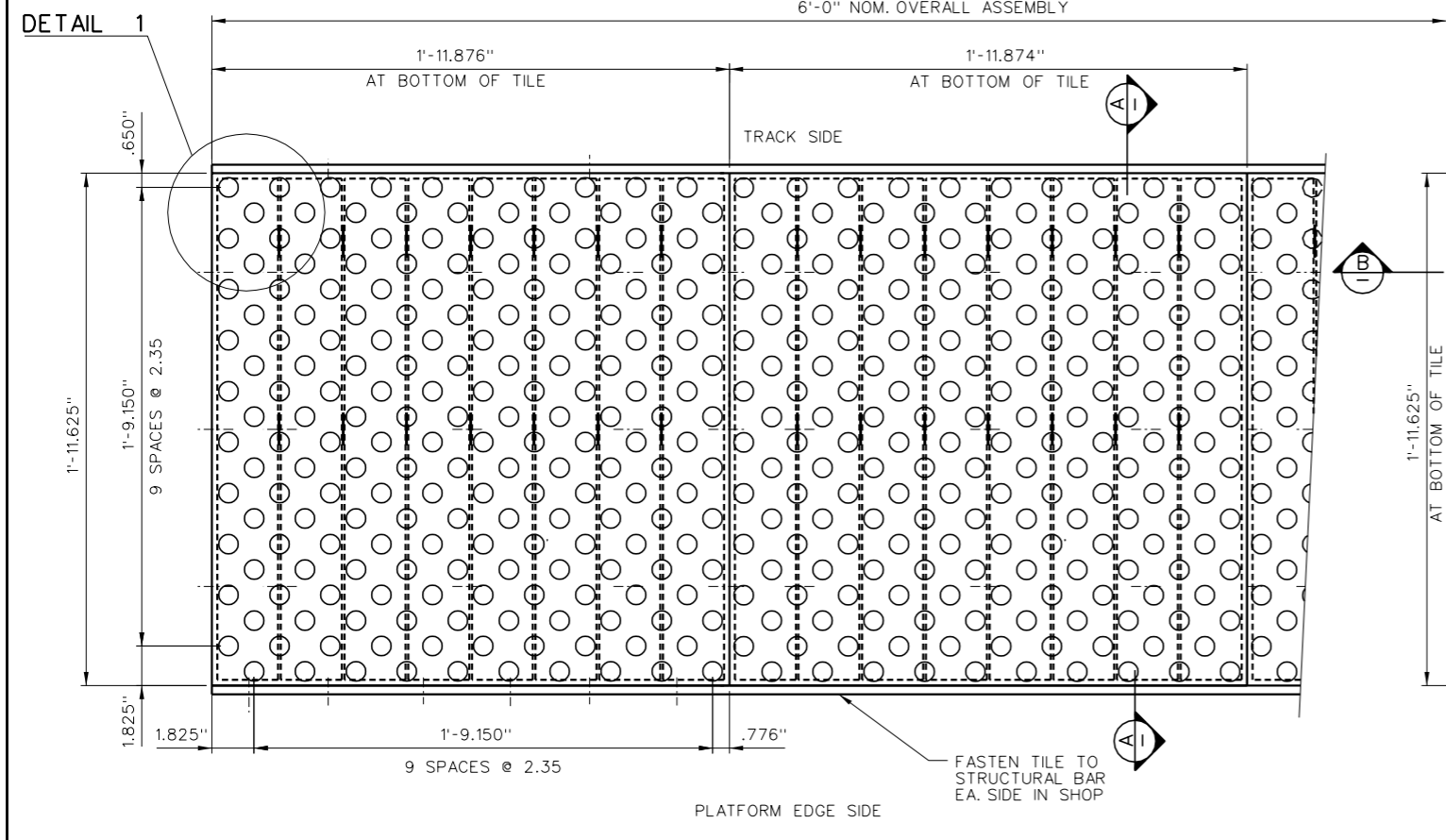


© 1999 ENGINEERED PLASTICS
 CONFIDENTIAL AND PROPRIETARY DOCUMENT
 U. S. PATENT NO. 5,303,669, U.S. PATENTS PENDING
 © KENNETH E. SZEKELY

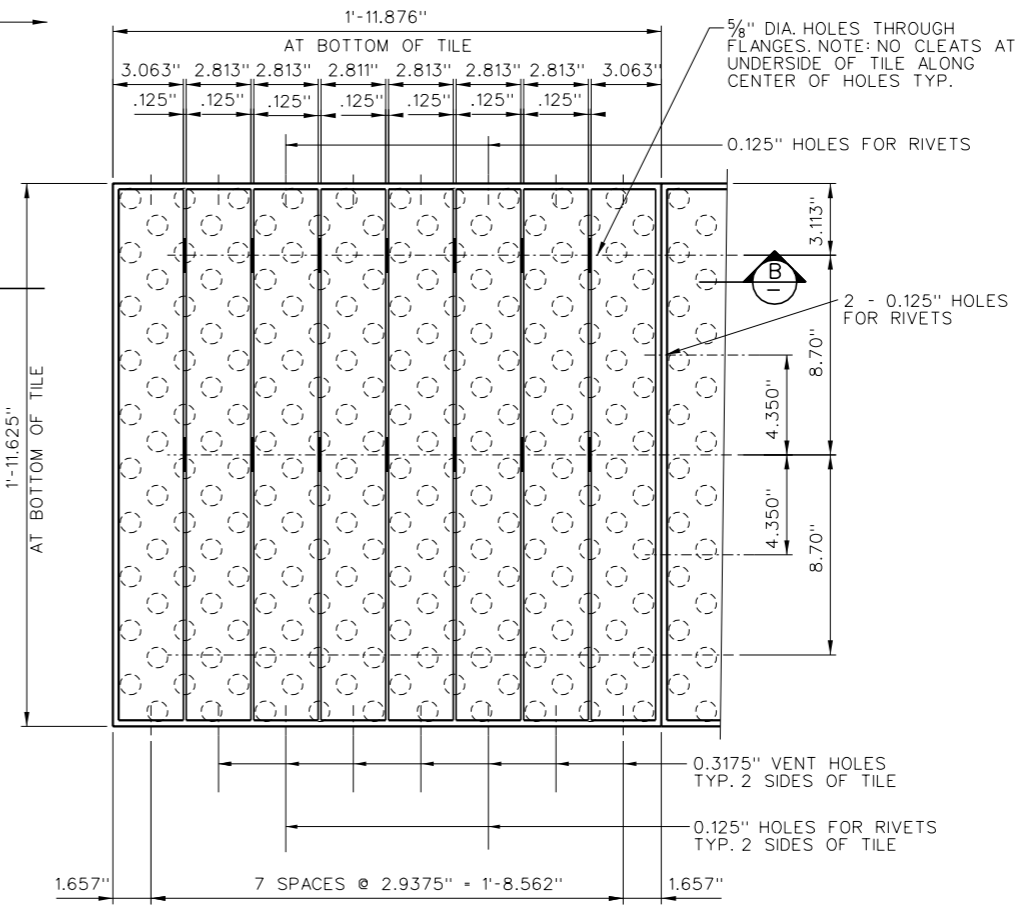
MATERIAL LIST

ITEM	DESCRIPTION	PART NO.	QTY
1	ARMOR TILE (24"x24")	ADA-C040-24	3
2	1/8" DIA. STRUCT. RIVETS	AT-SR125	16
3	BAR PL. 1" x 1/8" x 6'-0"	AT-PL81	2
4	POLYETHYLENE COVER 2MIL AT-CR2 6'-3" x 2'-3"		1

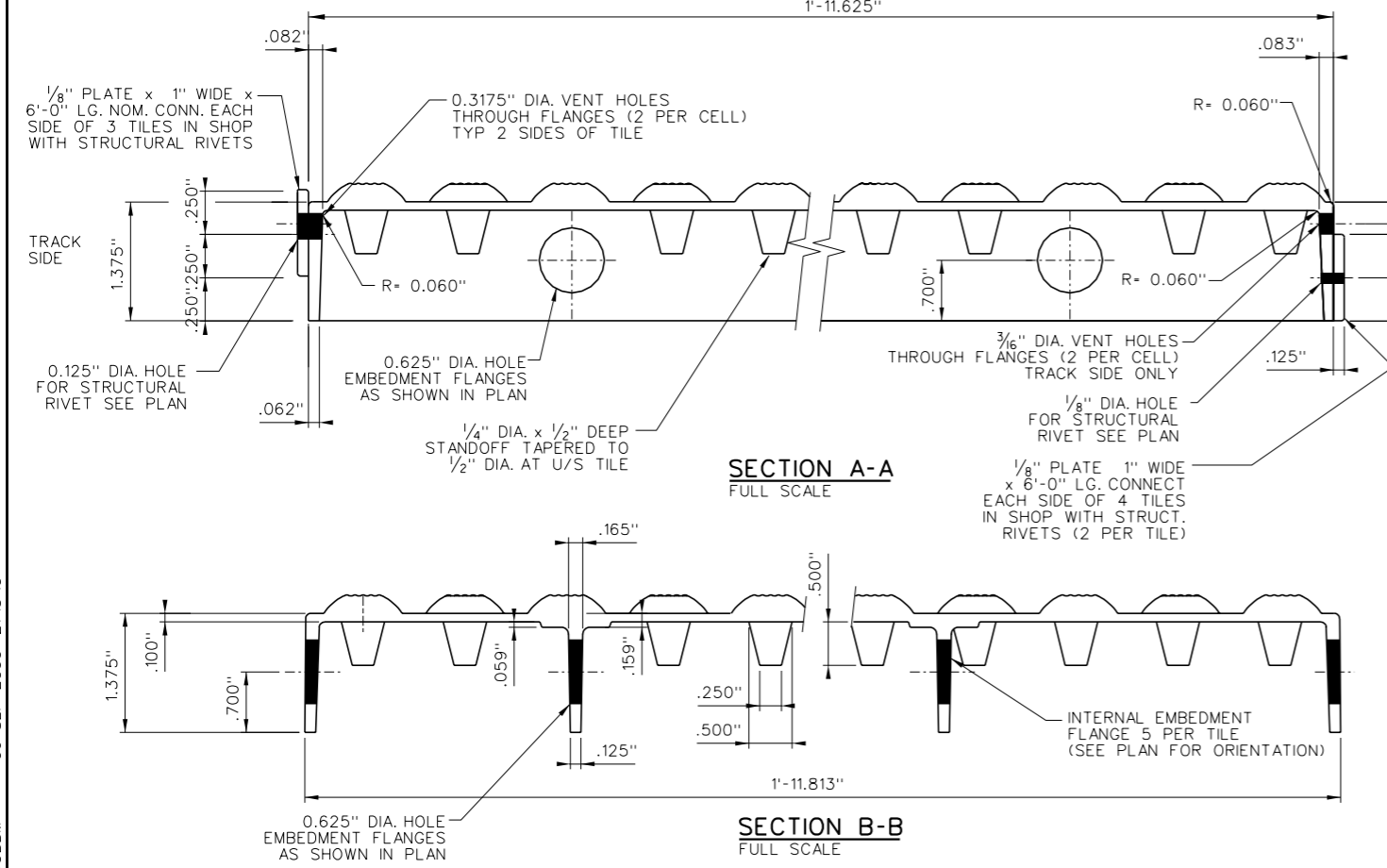
DRAWING	DESCRIPTION
ADA-C040-GEN1	INSTALLATION DRAWING



PLAN - TILE
 SCALE 3" = 1'-0"

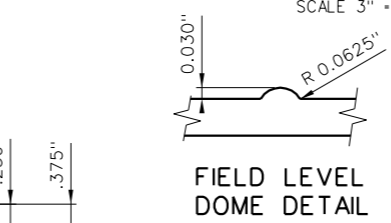


REFLECTED PLAN
 SCALE 3" = 1'-0"

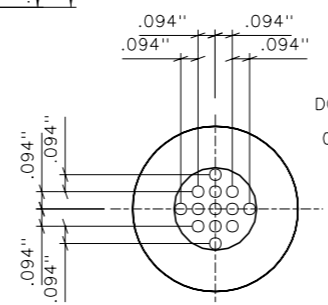


SECTION A-A
 FULL SCALE

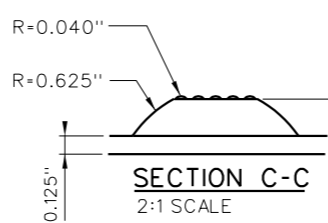
SECTION B-B
 FULL SCALE



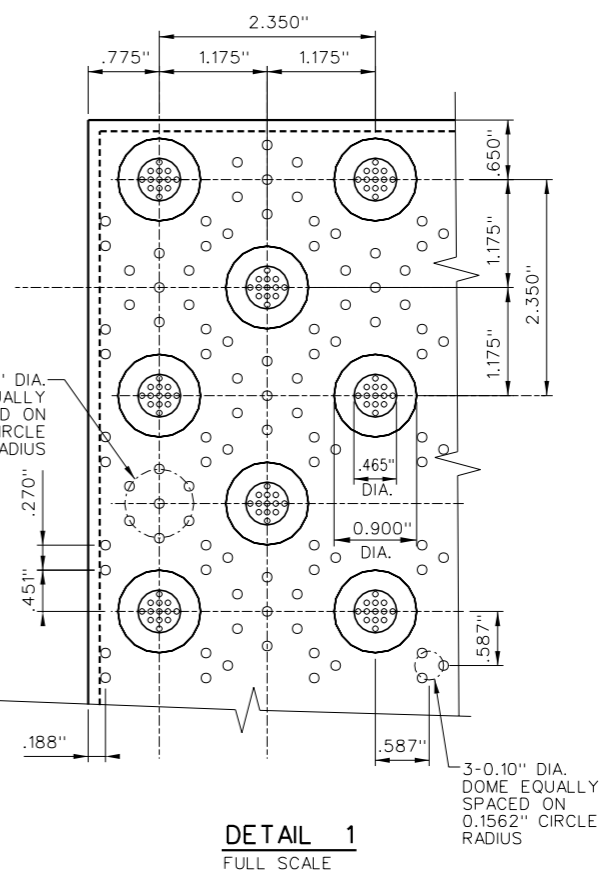
FIELD LEVEL DOME DETAIL



PATTERN DETAIL
 2:1 SCALE



SECTION C-C
 2:1 SCALE



DETAIL 1
 FULL SCALE

SCALE AS NOTED
 FULL SIZE ONLY

DESIGNED	BY K.E.S.	DATE 08/90
DRAWN	M.D.	10/12/95
CHECKED		

PROJECT MANAGER	
TRADE DETECTABLE WARNING SURFACE	PART NO. SEE MATERIAL LIST

MATERIAL VITRIFIED POLYMER COMPOSITE

SUBJECT
Armor-Tile ADA
 SOUND ATTENUATING TACTILE TILE
 DETECTABLE WARNING SURFACE SYSTEM

PROJECT
 24"x24" CAST IN PLACE TILE
 PLATFORM EDGE TACTILE TILE
 PLAN AND DETAILS

DRAWING NO. ADA-C040-GEN2-24X24	REV. NO. 0
------------------------------------	---------------

d:\eng-plastics\armor-tile_ada\cast.in.place\adoc040gen2-24x24m.dgn
 DOBMM 06 SEP 2000 2:15:10