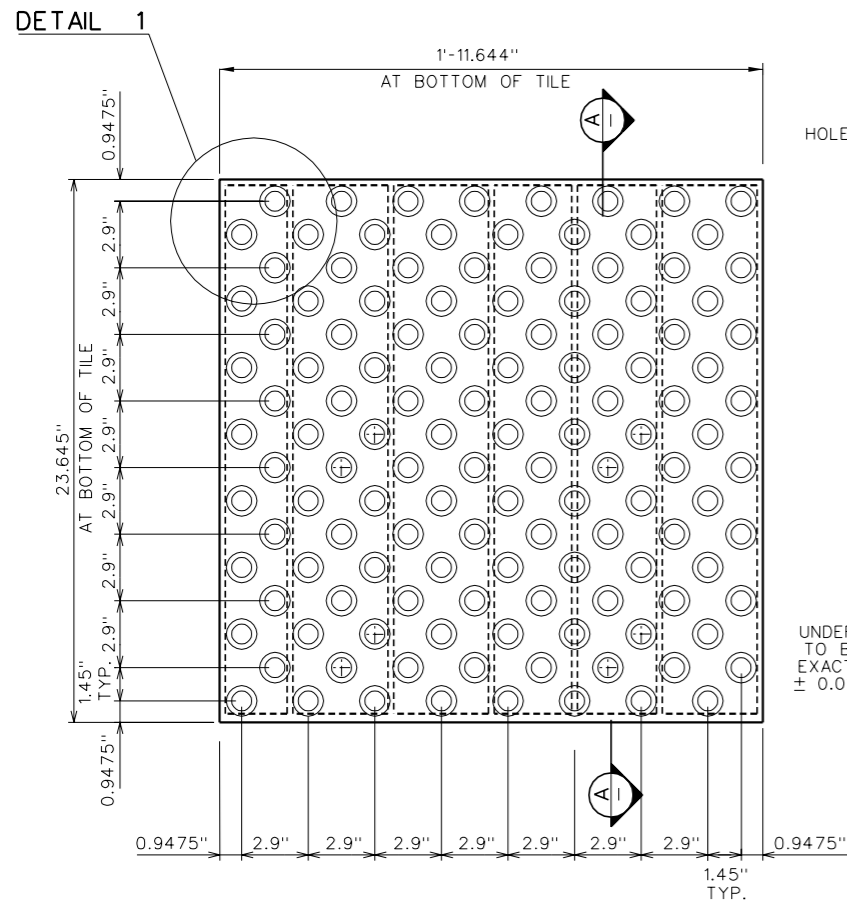


© 2000 ENGINEERED PLASTICS  
 CONFIDENTIAL AND PROPRIETARY DOCUMENT  
 U. S. PATENT NO. 5,303,669, U.S. PATENTS PENDING  
 © KENNETH E. SZEKELY

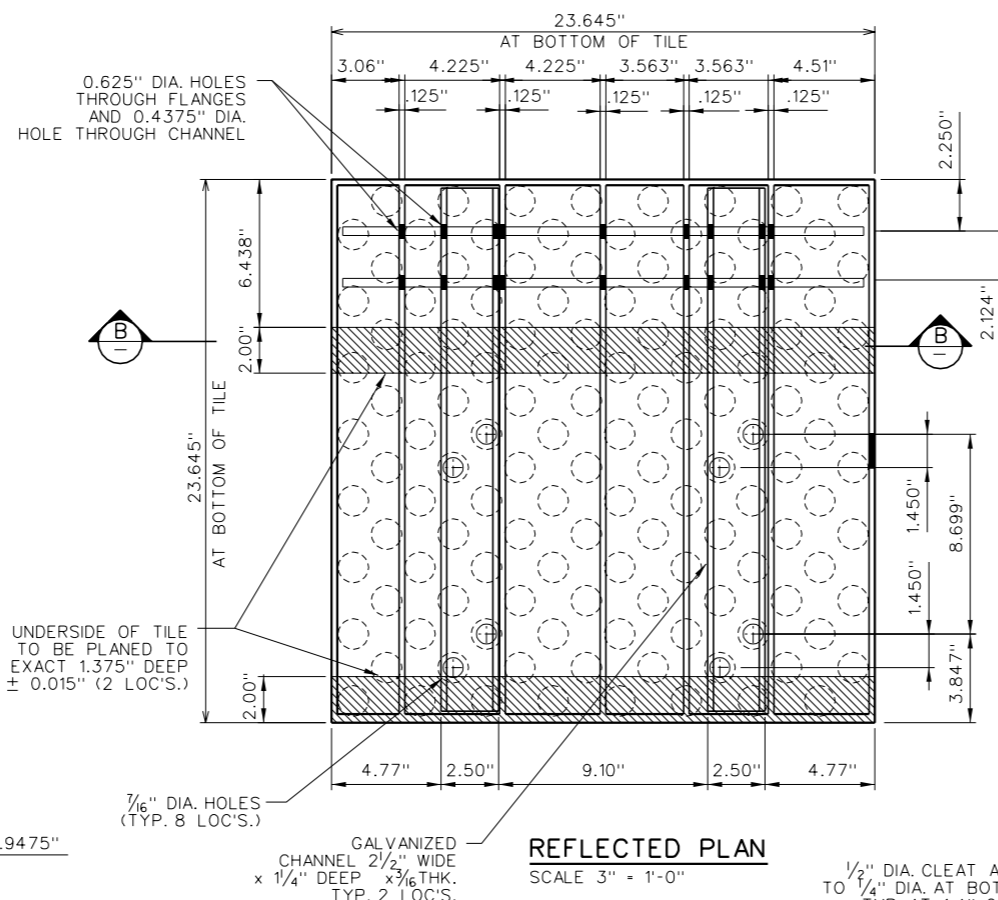
**MATERIAL LIST**

ITEM	DESCRIPTION	PART NO.	QTY
1	ARMOR TILE (24"x24")	AT-R144-24	1
2	CONCEALED CAP	AT-1100-CC	2
3	GALV. CHANNEL	AT-CH-01	2
4	3/8" DIA. REBAR	AT-RB-01	2

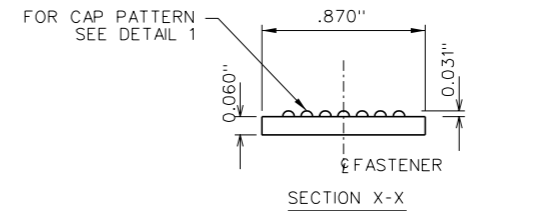
DRAWING	DESCRIPTION
AT-R144-24E	INSTALLATION DRAWING



**PLAN - TILE**  
 SCALE 3" = 1'-0"

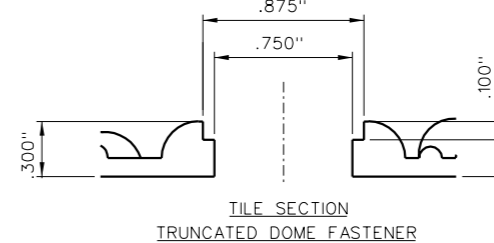


**REFLECTED PLAN**  
 SCALE 3" = 1'-0"



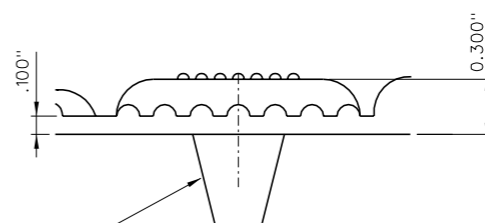
**CONCEALED CAP DETAIL**

PART NO. AT-1100-CC (4 REQ'D. PER TILE)  
 2:1 SCALE



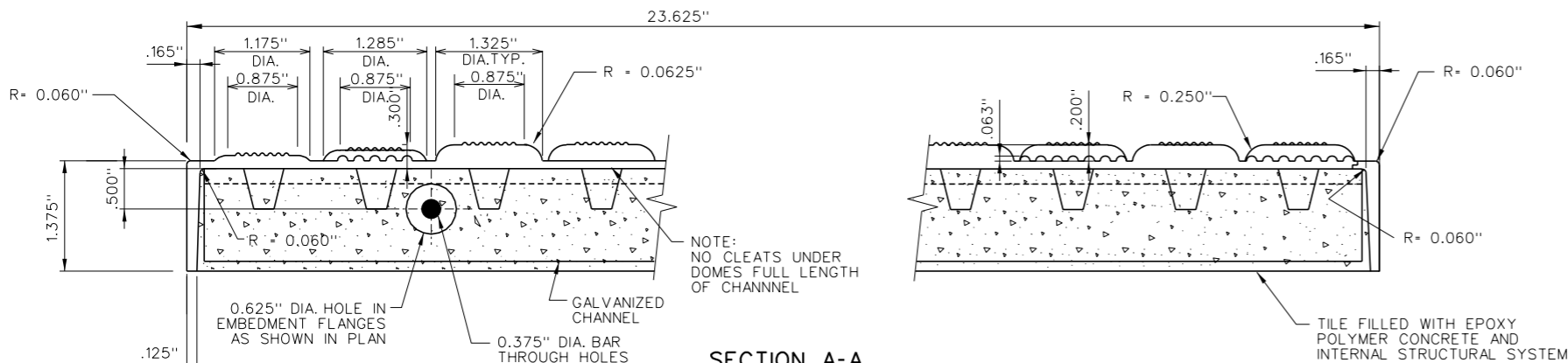
**CONCEALED FASTENER DETAIL**

2:1 SCALE

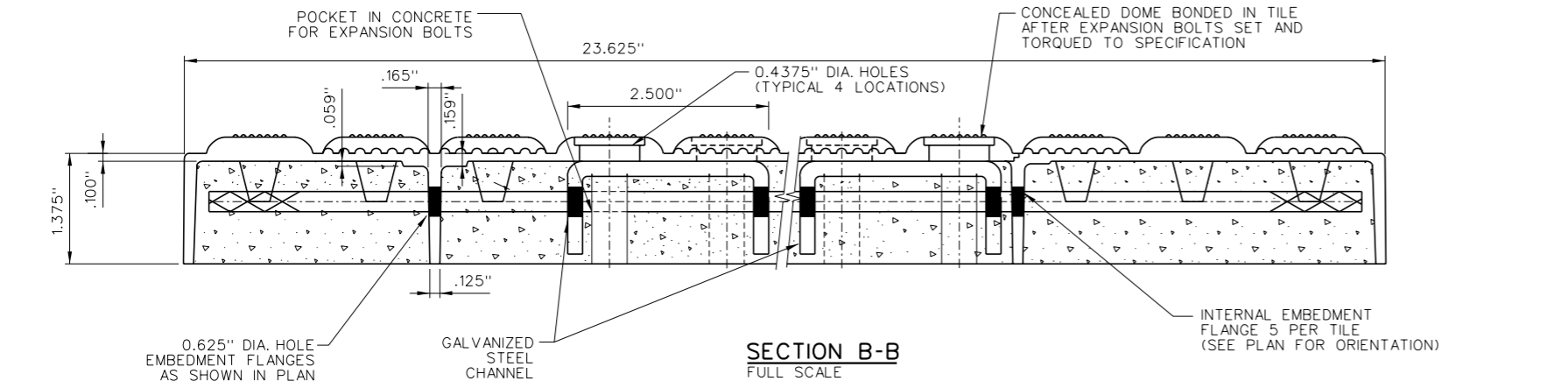


**CLEAT DETAIL**

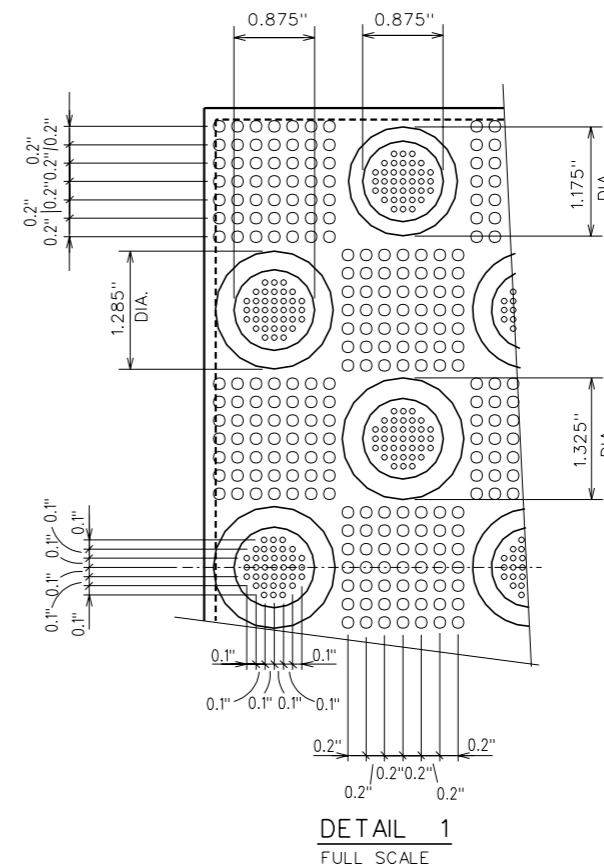
2:1 SCALE  
 NOTE:  
 NO CLEATS UNDERSIDE  
 OF TILE AT CHANNEL



**SECTION A-A**  
 FULL SCALE



**SECTION B-B**  
 FULL SCALE



**DETAIL 1**  
 FULL SCALE

SCALE AS NOTED  
 FULL SIZE ONLY

DESIGNED	BY K.E.S.	DATE 08/92
DRAWN	M.D.	06 SEP 2000
CHECKED		

PROJECT MANAGER	
TRADE DETECTABLE WARNING SURFACE	PART NO. SEE MATERIAL LIST

MATERIAL VITRIFIED POLYMER COMPOSITE

SUBJECT **Armor-Tile**  
 TACTILE TILE  
 DETECTABLE WARNING  
 SURFACE SYSTEM  
 MATERIAL DRAWING

PROJECT  
**PLATFORM EDGE STRUCTURAL  
 REINFORCED PAVER TILE SYSTEM  
 24" x 24" PAVER TILE  
 PLAN AND DETAILS**

DRAWING NO. AT-R144-GEN2-24X24	REV. NO. 0
-----------------------------------	---------------